



## **SB 2115 Heritage Restoration Cleaner**

SB 2115 Heritage Restoration Cleaner is a safer alternative to the use of traditional restoration cleaners.

The buffered acid in SB 2115 substantially reduces the possibility of discoloration or burning of the masonry surface. SB 2115 Heritage Restoration Cleaner has been used to remove light to moderate atmospheric soiling and is a satisfactory cleaner for some heavily soiled surfaces.

SB 2115 should not be used on concrete, marble or limestone masonry. When properly tested, SB 2115 is a safer alternative to harsh acids or abrasive cleaning of masonry surfaces.

### **Preparation**

Provide protection for window glass, aluminum frames, painted surfaces, foliage and pedestrian traffic. Test all non-masonry surfaces for possible negative reaction. Shut off all ventilation intakes, close all other entrances to the structure, provide temporary caulking if needed and provide protection to ensure that no cleaner or cleaner fumes enter the structure during application and rinsing of the surface. Protect all surrounding areas from possible damage, which might occur from spillage or spray during usage.

All projects should start with a series of test applications to determine the suitability of the cleaner for the subject surface or surfaces and to determine the proper dilution ratios. Some projects may require different dilutions for different masonry that may be a part of the same facade. Test areas of at least 10 square feet are recommended for each type of masonry surface and should involve the most difficult cleaning situations. When possible, these test areas should be left to age for 10 days or more to determine if there are any latent reactions that might require a modification of the cleaning methods or products.

### **Dilution and Coverage**

Dilution varies dependent on the surface, porosity of the surface and degree of soiling/stains, etc. Initial recommended dilution is 1 to 6 parts water to 1 part product. Test application is highly recommended to determine dilution rate and appropriate dwell time. Optimum dwell time and dilution rate may change with weather conditions.

Coverage: Dependent upon substrate and other conditions

### **Application**

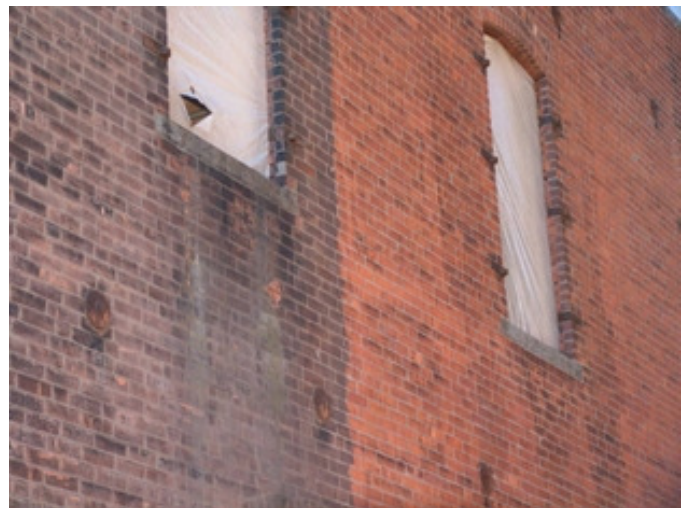
**Read SDS and product label for proper safety equipment.**

**Thoroughly pre-wet / soak** the surface prior to the application of the properly diluted cleaner. Apply the diluted cleaner with either acid brushes or low-pressure spray. Spray application should not be done at pressures greater than 40 psi. Leave the cleaner on the surface for the appropriate time as determined during testing. Do not allow the cleaner to dry on the surface. Scrubbing with masonry brushes may be beneficial in some cases. After the predetermined dwell time has passed, rinse the surface with a quick low pressure rinse. This is necessary to remove excess cleaner and stop the reaction. Follow with a thorough high pressure rinse as appropriate. Then remove the loosened dirt with pressure rinsing equipment that provides a

minimum flow rate of 3.5 gallons per minute and offers a series of fan tips not narrower than 15 degrees in width and up to 45 degrees in width. Avoid the use of "laser" tips or any other pressure acceleration tips. Always be aware of cleaner drift during application and rinsing to avoid possible damage.

SB 2115 is for use by professional contractors only. Some soiling conditions may require a two step cleaning method with the first step being 2140 Masonry Restorer NA followed by 2115 Heritage Restoration Cleaner. The need for this method of cleaning should be determined during the test phase of the project. Refer to 2140 Masonry Restorer NA data sheet for more information on this procedure. The use of dilution ratios of less than one part water should be avoided and must require the acceptance of the architect or project manager prior to any cleaning undertaken at this concentration.

Before / After Photo Using SB 2115



### **Technical Data**

Appearance: Clear Liquid	pH: < 1 in Concentrate
Biodegradable: Yes	Rinsing: Complete
Flash Point: None	Solubility: 100%
Foaming: Low	Stability: Good
Odor: Acidic	Wetting Ability: Excellent



### **SB 2115 Heritage Restoration Cleaner**

SB 2115 Heritage Restoration Cleaner is a safer alternative to the use of traditional restoration cleaners.

The buffered acid in SB 2115 substantially reduces the possibility of discoloration or burning of the masonry surface. SB 2115 Heritage Restoration Cleaner has been used to remove light to moderate atmospheric soiling and is a satisfactory cleaner for some heavily soiled surfaces.

SB 2115 should not be used on concrete, marble or limestone masonry. When properly tested, SB 2115 is a safer alternative to harsh acids or abrasive cleaning of masonry surfaces.

#### **Safety**

Harmful if swallowed. Causes severe skin burns and eye damage. May cause respiratory irritation.



**DANGER**

Refer to product SDS or product label for hazard statements, precautionary statements and safety information

#### **Warranty**

Shore Corporation warrants that this product conforms to the chemical composition described in the Product Label. SHORE CORPORATION EXPRESSLY DISCLAIMS ALL OTHER WARRANTIES, EXPRESSED OR IMPLIED, INCLUDING WARRANTIES OF MERCHANTABILITY OR FITNESS FOR A PARTICULAR PURPOSE. Shore Corporation shall not be responsible for any direct or consequential damages sustained as a result of the use of this product. Further, Shore Corporation shall not be liable for personal injuries, property damage or any other damages as a result of the use of this product, the sole responsibility of Shore Corporation under the within WARRANTY being the replacement of any nonconforming product. Acceptance and use of this product absolves Shore Corporation from any other such liability whatsoever and from whatever source. The within WARRANTY may not be modified or extended by Shore Corporation representatives or distributors, neither of which are empowered to make any product representation inconsistent with the terms hereof.

#### **Contact**

Trained representatives are available to assist with project assistance and product recommendations. Call **412/471-3330**.